

# PITT COUNTY 4-H

## SUMMER FUN 2019



### FUN ALL SUMMER LONG FOR YOUTH AGES 5-12



GOAT AND LAMB



ROBOTICS



COOKING

[www.facebook.com/PittCounty4H](https://www.facebook.com/PittCounty4H)



[pitt.ces.ncsu.edu](http://pitt.ces.ncsu.edu)

NC State University and N.C. A&T State University commit themselves to positive action to secure equal opportunity and prohibit discrimination and harassment regardless of age, color, disability, family and marital status, gender identity, genetic information, national origin, political beliefs, race, religion, sex (including pregnancy), sexual orientation and veteran status. NC State, N.C. A&T, U.S. Department of Agriculture, and local governments cooperating.

**PITT COUNTY 4-H IS DEDICATED TO PROVIDING YOUTH WITH POSITIVE AND EDUCATIONAL SUMMER CAMP EXPERIENCES**

Please use this guide to help you select the summer camps that best fit your child's needs. If you have any questions or concerns please contact the Pitt County 4-H Office!

**PITT COUNTY 4-H**



(252) 902-1709



brperry@ncsu.edu  
pitt.ces.ncsu.edu

Accommodation requests related to a disability should be made **two weeks** before program to the 4-H office: (252) 902-1709 or brperry@ncsu.edu



**BETSY JEFF PENN CAMP**

**August 4-9, 2019**

**Reidsville, NC**



This summer, Pitt County 4-H will be taking 10 youth ages 8 to 14 to the Betsy Jeff Penn 4-H Center in Reidsville, NC where they will spend 5 nights and 6 days meeting new friends, embarking on new adventures, and making memories that will last a lifetime. They will defeat their fears and achieve their goals on the climbing wall; participate in archery and learn to canoe and kayak. enjoy s'mores around the campfire; learn about the cultures of the 4-H camp counselors that are on staff.

This week long camping experience will provide youth the opportunity to gain and learn many life skills that they will carry with them as they grow and develop into young adults. Life skills such as: teamwork, goal setting, decision making, critical thinking skills, responsibility, and so many more.

**Date: August 4th-9th**  
**Ages: 8-14**  
**Cost : \$400.00**  
**Location: Reidsville, NC**





## CSI-BioTech Camp



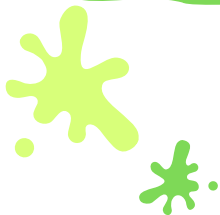
**Date:** July 9-11

**Time:** Residential Camp

**Ages:** 12 & up

**Cost:** \$120

**Location:** Wesleyan College - Will leave from  
Pitt County 4-H Office



Join fellow middle and high school youth to solve a murder mystery using science! You will learn about the techniques used by forensic scientist to help solve crime in this day and age. You will also learn the science behind various tasks that go into crime solving such as, fingerprinting, interrogation, DNA extraction, and electrophoresis. At the end of the week youth will work together to solve their very own murder mystery.



**Register with your local 4-H office by:**

**May 15, 2019**

**Cost includes: lodging, meals, and supplies.**





# Cooking 101

**Date: June 18 & 19**

**Time: 9:00am-3:00pm**

**Ages: 9-12**

**Cost: \$25.00**

**Location: Pitt County Extension Office**

In this tasty summer camp youth learn basic cooking skills, how to use MyPlate, avoid spreading germs while cooking, measure and mix ingredients, test baked goods for doneness, brown meat, and set the table for a family meal.

**Special instructions: Please wear closed toe shoes. Please note any food allergies. Youth will prepare meal for lunch.**

## CLEVERBUDS Cooking Camp

**Date: June 20 & 21**

**Time: 9:00am-12:00pm**

**Ages: 5-8**

**Cost: \$20.00**

**Location: Pitt County Extension Office**

Cloverbuds (youth 5-8) will learn hands-on experiences identifying things that are sharp, hot, and learning to be careful in the kitchen. Cloverbuds will learn about where a food item comes from and how it gets to the table.

**Special instructions: Please note any food allergies. Please wear closed toe shoes.**

# Goat Camp

**Date:** June 24 -27  
or 1:00pm-4:00m

**Time:** 8:30am-11:30am

**Ages:** 5-12

**Cost:** \$60.00

**Location:** Pitt County Fairgrounds

It's time for goat mania again this year! Learn how to care for goats and proper showing techniques for competition. This camp fills up fast so sign up early!

**Special instructions:** Please wear closed toe shoes.



# Lamb Camp

**Date:** June 24 -27

**Time:** 8:30am-11:30am

or 1:00pm-4:00pm

**Ages:** 5-12

**Cost:** \$60.00

**Location:** Pitt County Fairgrounds

Looking for a new adventure? This camp is sure have "ewe" longing for a lamb. Learn how to care for sheep and proper showing techniques for competition.



**Special instructions:** Please wear closed toe shoes.

# Fishing for Fun

**Date: July 2nd**

**Time: 9:00am**

**2:00pm**

**Ages: 8 and up**

**Cost:\$10.00**

**Location: Pitt County Extension Office**



Spend the day learning to fish in the interactive and hands on camp! Youth will travel off site to a local pond to learn all the basics of making a great catch! All materials will be provided, but youth are encouraged to bring their own rod, if they have one.

**Special instructions: Bring bag lunch and a fishing rod (if you have one, if not one will be provided)**



## Farm to Table



**Date: July 15-19**

**Time: 9:00am-3:00pm**

**Ages: 9 and up**

**Cost:\$75.00**

**Location: Pitt County Extension Office**

**\*Must have attended Farm to Table camp in 2018 or be registered for Cooking 101**

Do you know where your food comes from? Do you like to cook? If so, join Pitt County 4-H as we learn about the food we eat, from the farm to our plate! In this week long camp participants will learn about agriculture by visiting local farms, picking fruits and vegetables to later transform into delicious dishes. On the last day of camp, campers will participate in a Food Challenge Competition (Chopped style) to see which team can prepare the best dish! At the end of the week youth will walk away with new skills and a few kitchen googies.

**This is an advanced cooking camp, to attend camper must be registered for Cooking 101 or have attended Farm to Table camp last summer.**

**Special instructions: Bring bag lunch (we will be cooking in the afternoon ). Wear closed toe shoes.**

# Baking Camp



**Date: August 8&9**

**Time: 9:00am-3:00pm**

**Ages: 10 and up**

**Cost:\$20.00**

**Location: Pitt County Extension Office**

Do you like being creative in the kitchen? If so, then this tasty camp might be right for you! Youth will learn all the skills to successfully bake and decorate their favorite homemade treats! On the final day youth will put their new skills to work by competing in a friendly baking contest.

**Special instructions: Bring bag lunch. Wear closed toe shoes.**

# Lego Robotics Camp 1

**Date: July 30**

**Time: 9:00am-3:00pm**

**Ages: 5-8**

**Cost:\$25.00**

**Location: Pitt County Extension Office**



This camp will use the LEGO WEDO 2.0 product that allows youth ages 5-12 to build robots using the LEGO pieces and then program the robot to perform different functions.

**Special instructions: Bring bag lunch.**

# Lego Robotics Camp 2



**Date:** July 31

**Time:** 9:00am-3:00pm

**Ages:** 5-8

**Cost:**\$25.00

**Location:** Pitt County Extension Office

This camp will use the LEGO WEDO 2.0 product that allows youth ages 5-12 to build robots using the LEGO pieces and then program the robot to perform different functions.

**Special instructions:** Bring bag lunch.

# Lego Robotics Camp 3



**Date:** August 1

**Time:** 9:00am-3:00pm

**Ages:** 9-12

**Cost:**\$25.00

**Location:** Pitt County Extension Office

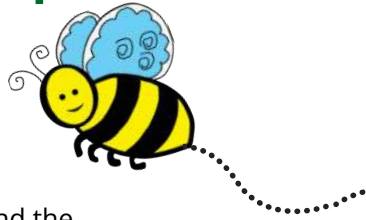
This camp will use the LEGO WEDO 2.0 product that allows youth ages 5-12 to build robots using the LEGO pieces and then program the robot to perform different functions.

**Special instructions:** Bring bag lunch.



# Busy Bee's Camp

**Date:** August 2      **Time:** 9:00am-3:00pm  
**Ages:** 6-12      **Cost:** \$10.00  
**Location:** Pitt County Extension Office

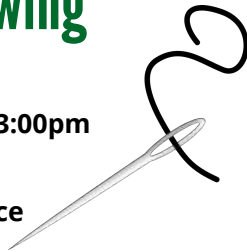


They will learn that bees, both native bees and the European honey bee produce delicious and healthy food that humans have been eating for centuries. From the crunch of a fresh apple, to the dribble of watermelon juice, nearly one out of every three bites we eat are dependent on bee pollination. Youth will also have a chance to create bee's wax items such as soap, chapstick, or a candle.

**Special instructions:** Bring bag lunch.

# Hand Sewing

**Date:** August 5      **Time:** 9:00am-3:00pm  
**Ages:** 7 and up      **Cost:** \$15.00  
**Location:** Pitt County Extension Office



From beginners to advance, join us as we learn about hand sewing skills, patterns, and techniques while learning to make a fun gifts and items for family, friends and ourselves!

**Special instructions:** Bring fabric of choice and Bring bag lunch.

# Sew Much Fun

**Date: August 6 & 7**

**Time: 9:00am-3:00pm**

**Ages: 9 and up**

**Cost:\$30.00**

**Location: Pitt County Extension Office**



From beginners to advance, join us in this hands on... camp as we learn about sewing skills on a sewing machine, patterns, and techniques while learning to make a functional item!

**Special instructions: Bring fabric of choice and Bring bag lunch.**

# Kindergarten Camp

**Date: August 12&13**

**Time: 9:00am-3:00pm**

**Ages: 5-8**

**Cost:\$20.00**

**Location: Pitt County Extension Office**



Kindergarten Camp will offer your child opportunities for STEM and literacy activities. Your child will enjoy fun, playful, group activities featuring arts/crafts, songs, puzzles, and games to help make the kindergarten transition easier. While the main focus will be kindergarten - this camp will benefit any child ages 5-8!

**Special instructions: Bring bag lunch.**

# Island Adventures STEM Camp

**Date: August 14-16**

**Time: 9:00am-3:00pm**

**Ages: 9&up**

**Cost:\$30.00**



**Location: Pitt County Extension Office**

At Island Adventures camp, we'll "travel" to a remote, secret island and spend a week exploring and learning about ocean and coastal life, including otters, manatees, polar bears, and whales. We'll use maps to study the island and learn about island survival by building shelters and finding fresh water.

**Special instructions: Bring bag lunch.**

Please complete one registration form for each youth. Registration is open until the camp is full, with a waiting list maintained. Registration is complete when all forms and applicable **NONREFUNDABLE** fees are paid with cash, check, or money order. If camp is canceled fee will be returned. Make checks payable to '**Pitt County Mutual**' and deliver or mail to:

**Pitt County 4-H**

**403 Government Circle, Suite 2, Greenville, NC 27834.**

Participants are NOT allowed cell phones, iPads, etc. during class. The adult(s) in charge will have access to a phone in case of an emergency. Please check special instructions and description for location of each day camp.



**Thank you for choosing to camp with Pitt County 4-H this summer. If you have any questions or concerns please contact us at :**

**Phone: (252) 902-1709**

**Email: lsdail2@ncsu.edu**