

## LEGEND

### 1 INFORMATION CENTER

**2 BUTTERFLY GARDEN** This garden attracts butterflies with nectar-producing plants including perennials, annuals, native plants, vines, deciduous shrubs, and small trees. Host plants, such as fennel and dill, provide food for caterpillars and a place to lay eggs. Wet sand puddles provide moisture and a resting place for butterflies.

**3 LAWNS** The five lawns around the Pitt County Agricultural Center show the different types of lawn grasses that grow well in eastern North Carolina. Two are common bermuda, one is a mixture of improved bermuda, one is centipede, and one is zoysia. Maintenance requirements are indicated at each lawn.

**4 WILDFLOWER GARDEN** The Wildflower Garden features a colorful drought-tolerant, self-sustaining, self-seeding annual garden alternative to turf grass. In fall 2007 annual and perennial wildflower seeds were sown over the dead St. Augustine lawn. Additional native grasses and plants were added in spring 2008.

**5 CONTAINER GARDENS** With different combinations of bulbs, dwarf-size annuals, perennials, and shrubs, the Container Gardens showcase colorful flowers and plants with interesting textures that the home gardener with a limited amount of space, time, or physical ability can use. Pots are refurbished seasonally displaying new ideas and combinations.

**6 FIRE HYDRANT GARDEN** Using tiny spring-flowering bulbs and evergreen sedums that thrive in hot, dry places, the Fire Hydrant Garden is a four-season garden that can be created in a very small space whether around a fire hydrant or another interesting object.

**7 PERENNIAL BORDER** The Perennial Border is a mosaic of perennials, small shrubs, grasses, and bulbs designed to provide exciting displays of color, texture, and form throughout the year.

**8 MIXED BORDER** The Mixed Border includes a variety of plants and designs to inspire the home gardener with ideas for new garden plants that grow well in Pitt County.

**9 HERB GARDEN** The Herb Garden combines culinary herbs with some additional plants such as salvias that complement the texture and color of the garden. A stylized "bottle tree" overlooks the garden with labeled spoons serving as plant markers.

**10 COMPOST DEMONSTRATION AREA** The Compost Demonstration Area features a traditional three-bin composting system for large gardens. Plastic bins for composting in smaller spaces can also be seen.

**11 VEGETABLE GARDEN** Using a drip-irrigation system, this small-space, raised-bed Vegetable Garden is planted with a variety of spring and summer vegetables. No chemical sprays are used, with only light fertilizer applied at planting time. Volunteers deliver much of the harvest to the local Food Bank.

**12 CHILDREN'S ABC GARDEN** The Children's ABC Garden featuring PI-CO-BO Bunny is designed to introduce children to the joys of plants and gardening by using flowers and vegetables starting with each letter of the alphabet. Child-size sculptures and seating and the rabbit hole encourage children to interact with the garden in a fun-filled way while learning about the love of nature.

**13 PITTOSPORUM TRIAL AREA** Widely cultivated as ornamental plants in the south due to their glossy evergreen leaves and lovely scented flowers, Japanese Pittosporums were planted in April 2004 to trial their performance in eastern North Carolina.

**14 FRUIT & VEGETABLE GARDEN** Under development, this garden will feature small fruits for the home garden that can also function as edible landscaping along with vining vegetables that can be grown on trellises.

**15 WET SITE PLANTS** This garden features native and exotic plants that will flourish in very wet areas.

**16 ROSE GARDEN** Established in 2006 to demonstrate an easy-care rose garden, the Rose Garden has more than 50 shrub-type, disease-resistant roses that require little care. While these roses are pruned and fertilized each spring and occasionally deadheaded, they have never been sprayed for diseases or insects.

**17 CERTIFIED PLANT PROFESSIONAL COLLECTION** This garden is a study and training site for North Carolina's Certified Plant Professional and the Certified Landscape Technician programs.

**18 FUTURE GARDENS** As funding becomes available, the arboretum will be enhanced with new gardens, including gardens for winter interest, weeping plants, plants for narrow spaces, small ornamental trees, flowering shrubs, native plants, and a species collection.

**19 PITT COUNTY AGRICULTURAL CENTER** The Agricultural Center landscaping consists of all planting beds around the building that are not part of another designated garden (e.g., Perennial, Wildflower, or Wet Sites). The mix of evergreen and flowering shrubs and trees, perennials, and annuals show how commercial landscaping can be more than just evergreens around a building. Inside the center, gardeners can obtain information sheets, soil testing kits, and other gardening information.

**20 PARKING**

**21 RAIN WATER CISTERNS**

# PITT COUNTY ARBORETUM

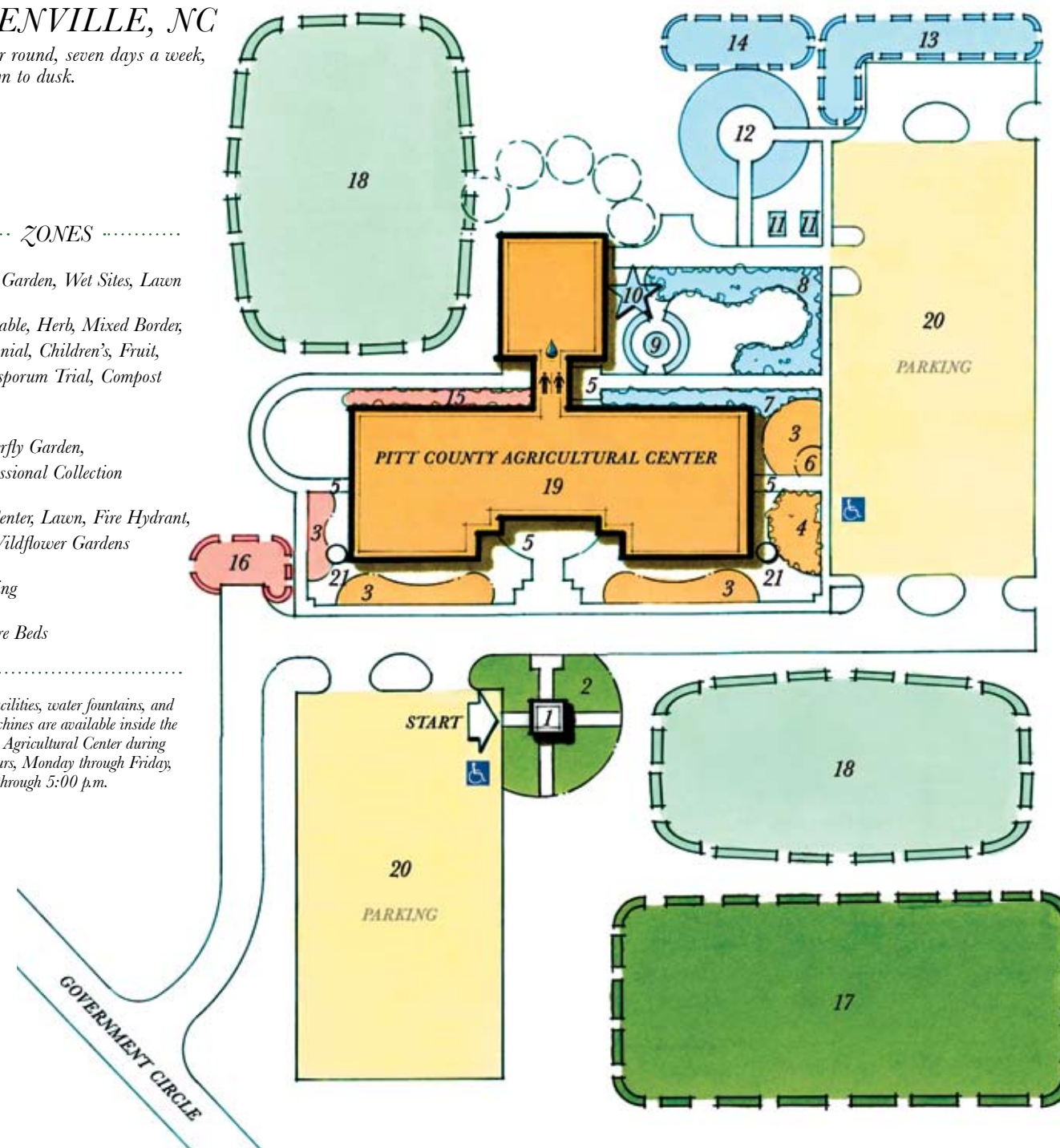
GREENVILLE, NC

Open year round, seven days a week,  
from dawn to dusk.

## ZONES

- Rose Garden, Wet Sites, Lawn
- Vegetable, Herb, Mixed Border, Perennial, Children's, Fruit, Pittosporum Trial, Compost Area
- Butterfly Garden, Professional Collection
- Ag Center, Lawn, Fire Hydrant, & Wildflower Gardens
- Parking
- Future Beds

Restroom facilities, water fountains, and vending machines are available inside the Pitt County Agricultural Center during business hours, Monday through Friday, 8:00 a.m. through 5:00 p.m.



## VISITORS GUIDE



"Gardening You Can Do"

# welcome to the Pitt County Arboretum

Surrounding the Pitt County Agricultural Center, the arboretum shows what you can do in your home garden. Four-season color, drought-tolerant plants, vegetable and children's gardens, a professional tree and shrub collection, and more await your exploration.



Begun in 1998, the seven-acre arboretum is designed to educate both consumers and the horticultural industry about plant selection, care, and pest management practices that will maximize plant performance, sustain economic resources, and protect the environment.

On the other side of this flyer you will find a self-guided tour to the arboretum. Allow about one hour for the tour.

Maintained by the Pitt County Master Gardeners, the arboretum is open year round, seven days a week, from dawn to dusk, free of charge.

Guided walking tours are available at 10:00 a.m. on the first Thursday of the month year round except from June to August when the tours begin at 9:00 a.m. Other days and times may be scheduled by appointment by calling 252-902-1709. Please call at least one week ahead of your desired tour day and time.

Special events during the year include a spring open house and plant sale in May. Please check the arboretum's web site at <http://pitt.ces.ncsu.edu> for more information.

Plant questions can be called in to the Master Gardeners Hotline, 252-902-1705, from 10:00 a.m.–12:00 noon on Mondays, Wednesdays, and Fridays. Other times you can leave a message describing your plant issue, and a Master Gardener will return your call during the scheduled hours above.

## GARDEN ETIQUETTE

For the enjoyment of everyone and to protect the garden, please follow these simple guidelines. Thank you.

Flowers and plants should be left for all to enjoy. Please do not collect plants, flowers, fruit, vegetables, seeds, or labels.

Supervise children closely.

Pets are allowed, but please take care to clean up after them.

Please stay on the walking paths and do not climb the trees.

Please use trash containers for all refuse.

## MASTER GARDENERS

The Pitt County Master Gardener volunteers are integral to the maintenance and success of the arboretum. If you are interested in becoming a Master Gardener, please visit our web site at <http://pitt.ces.ncsu.edu> for more information.



## BECOME A FRIEND OF THE ARBORETUM

To help support and expand our beautiful arboretum and to strengthen our teaching, demonstration, and outreach programs, become a Friend of the Pitt County Arboretum. Started in 2002, the nonprofit Friends organization plays a critical role in preserving and perpetuating an important local cultural resource. The arboretum depends on memberships and gifts for our operating expenses. All levels of membership are important to the success and continuation of the gardens. By joining the Friends, you will have the satisfaction of helping the arboretum grow and prosper.

Friends enjoy the following benefits:

- Special Preview Sale—Current paid members will be invited to a reception and a limited preview plant sale the day before the annual plant sale in May.
- Arboretum Newsletter—Published twice a year, the newsletter keeps Friends informed about plants, upcoming programs, and new developments at the arboretum.
- Horticultural Library—With more than 200 books in the collection, Friends may use the arboretum's library to research and learn about a variety of horticultural subjects.
- Special Raffles—Friends are eligible to participate in fundraisers held throughout the year that include raffles for special plants and trees.
- Discounts—By showing their membership card, Friends are eligible for discounts at the following gardening centers:

Carolina Seasons Nursery, Greenville  
10% off regularly priced items

CD Rouse & Co., Winterville  
10% off hardware and lawn/garden supplies excluding equipment, parts, and service

Flower Time, Grifton  
10% off regularly priced plant materials, trees, and shrubs

Little's Nursery, Greenville  
10% off regularly priced trees and shrubs



To become a Friend of the Pitt County Arboretum, please fill out and return the adjacent form. Thank you!

Yes, I would like to become a Friend of the Pitt County Arboretum.

### MEMBERSHIP LEVEL

- Student (full-time college) ..... \$20
- Senior Citizen (55 and over) ..... \$20
- Individual ..... \$25
- Family (2 membership cards)..... \$40
- Sunflower ..... \$100–\$249
- Rudbeckia..... \$250–\$499
- Abelia ..... \$500–\$999
- Rose..... \$1,000–\$2,499
- Magnolia..... \$2,500–\$4,999
- Bald Cypress ..... \$5,000 & above

### MEMBERSHIP TYPE

- New
- Renewal
- Gift: *Membership Is For* \_\_\_\_\_

Name (please print) \_\_\_\_\_

Company \_\_\_\_\_

Address \_\_\_\_\_

City, State, Zip Code \_\_\_\_\_

Phone \_\_\_\_\_

E-mail \_\_\_\_\_

*Gift Membership Given By:*

Name (please print) \_\_\_\_\_

Address \_\_\_\_\_

City, State, Zip Code \_\_\_\_\_

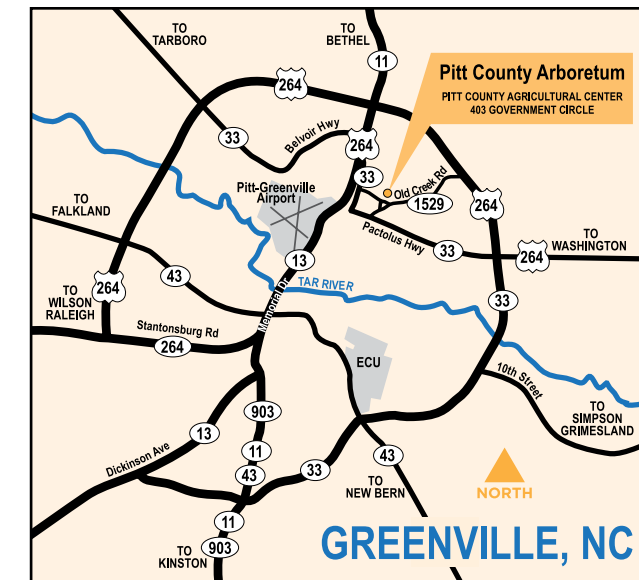
Phone \_\_\_\_\_

E-mail \_\_\_\_\_

Please make check or money order payable to **Pitt County Arboretum Enhancement Fund**, and mail with this form to:

Friends of the Pitt County Arboretum  
403 Government Circle, Suite 2  
Greenville, NC 27834

Membership is tax-deductible to the fullest extent allowed by law.



## PITT COUNTY ARBORETUM

403 GOVERNMENT CIRCLE

GREENVILLE, NC 27834

252-902-1709

<http://pitt.ces.ncsu.edu>



Distributed in furtherance of the acts of Congress of May 8 and June 30, 1914. North Carolina State University and North Carolina A&T State University commit themselves to positive action to secure equal opportunity regardless of race, color, creed, national origin, religion, sex, age, or disability. In addition, the two universities welcome all persons without regard to sexual orientation. North Carolina State University, North Carolina A&T State University, U.S. Department of Agriculture, and local governments cooperating.